

# A Starry Night in Your Garden

Our sustainable celestial garden has a variety of garden features that the average homeowner can recreate in a small yard on a modest budget. Inspired by Van Gogh's Starry Night, the space - ethereal, light and airy - showcases art created from recycled and repurposed materials which play on the sky, the moon and the stars. All paving surfaces are water permeable, saving water and minimizing storm water runoff. Dappled with white flowering plants, the moon garden with silvery succulents and grey foliage that reflects the moonlight and contrasts with nearby greens, blues and purples beckons the homeowner to relax on the patio, sit back and gaze at the heavens above. The color palette for the exhibit emphasizes four colors: an evening mist white, a star spangled cobalt blue, a twilight sky blue, and glowing green of moonlight.

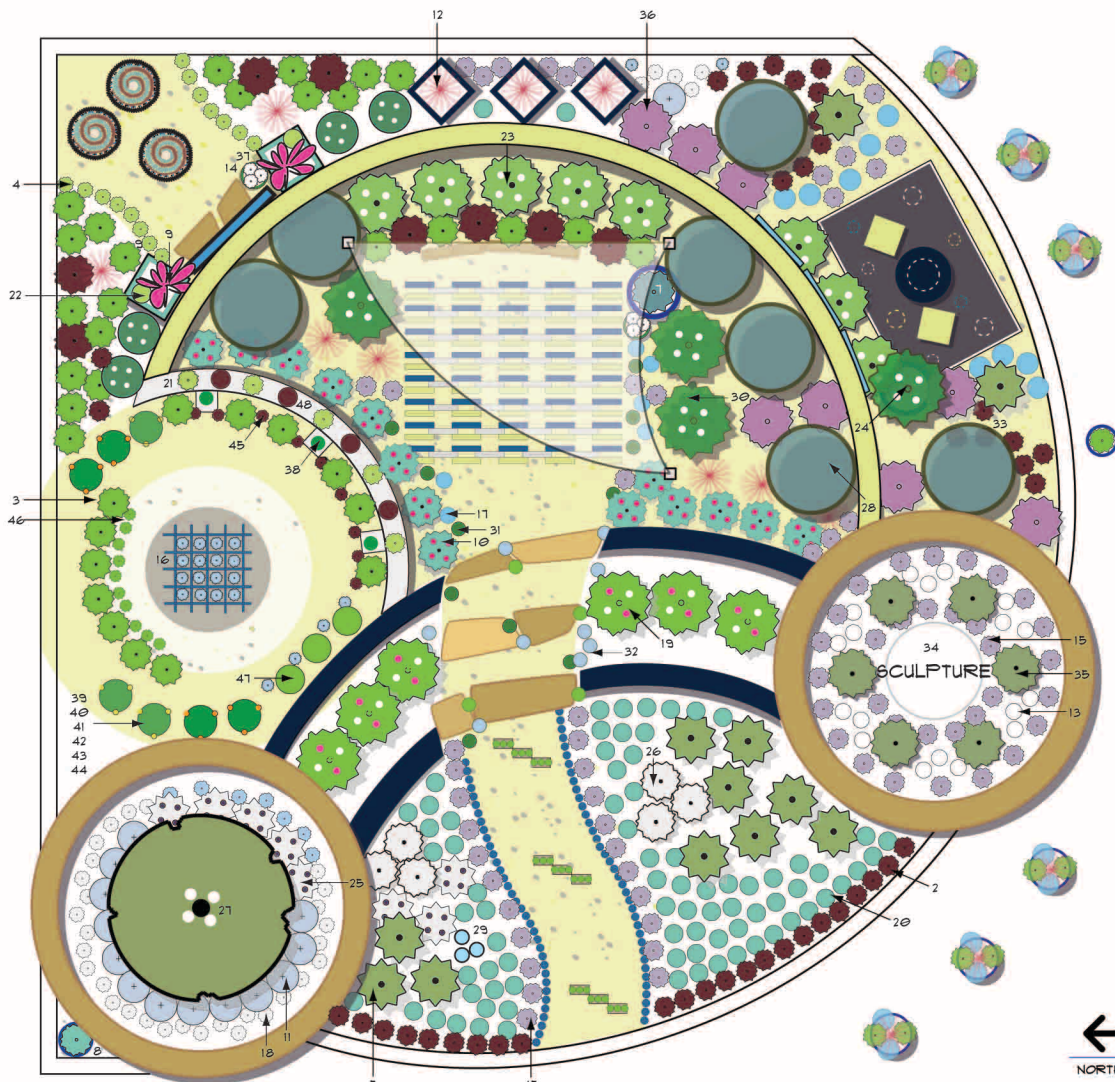
## PLANT LEGEND

# BOTANICAL NAME COMMON NAME

1	<i>Aeonium arborescens</i> 'Cabernet'	Cabernet Aeonium
2	<i>Aeonium arborescens</i> 'Zwartkop'	Zwartkop Aeonium
3	<i>Aeonium urbicum</i> 'Salad Bowl'	Salad Bowl Aeonium
4	<i>Aeonium urbicum</i> 'Side Salad'	Side Salad Aeonium
5	<i>Agave americana</i>	Century Plant
6	<i>Agave bovicornuta</i> 'Reggae Time'	Reggae Time Agave
7	<i>Agave parryi</i>	Parry's Agave
8	<i>Agave potatorum</i>	Butterfly Agave
9	<i>Bougainvillea</i> 'Imperial Delight'	Imperial Delight Bougainvillea
10	<i>Calandrinia grandiflora</i>	Rock Purslane
11	<i>Convolvulus cneorum</i>	Bush Morning Glory
12	<i>Cordylone australis</i> 'Red Star'	Red Star Cabbage Palm
13	<i>Cosmos bipinnatus</i> 'White'	White Cosmos
14	<i>Dudleya greenei</i>	Greene's Dudleya
15	<i>Echeveria</i> 'Afterglow'	Afterglow Echeveria
16	<i>Echeveria</i> 'Blue Curls'	Blue Curls Echeveria
17	<i>Echeveria</i> sp.	Hen and Chicks
18	<i>Echeveria lilacina</i>	Ghost Echeveria
19	<i>Gaura lindheimeri</i>	White Gaura
20	<i>Helictotrichon sempervirens</i>	Blue Oat Grass
21	<i>Ipomoea batatas</i> 'Bronze'	Bronze Sweet Potato Vine
22	<i>Ipomoea batatas</i> 'Margarita'	Margarita Sweet Potato Vine
23	<i>Lavandula heterophylla</i>	Sweet Lavender
24	<i>Leptospermum laevigatum</i>	Australian Tea Tree
25	<i>Leucophyllum frutescens</i> 'White Cloud'	White Cloud Texas Sage
26	<i>Mariana sedifolia</i>	Pearl Bluebush
27	<i>Melaleuca linariifolia</i>	Snow in Summer
28	<i>Podocarpus elongatus</i> 'Monmal'	Icee Blue Yellow-Wood
29	<i>Pilosocereus pachycladus</i>	Blue Columnar Cactus
30	<i>Rosa</i> 'Iceberg'	Iceberg Rose
31	<i>Sempervivum</i> 'Kalinda'	Kalinda Hen and Chicks
32	<i>Sedum spathulifolium</i> 'Cape Blanco'	Cape Blanco Stonecrop
33	<i>Senecio radicans</i>	String of Bananas
34	<i>Tilandsia</i> sp.	Air Plant
35	<i>Verbena lilacina</i> 'De La Mina'	Cedros Island Verbena
36	<i>Westringia</i> 'Wynyabbie Gem'	Wynyabbie Gem Coast Rosemary
37	<i>Zinnia</i> 'Profusion White'	Profusion White Zinnia

## EDIBLES

38	<i>Fragaria X ananassa</i>	Common Strawberry
39	<i>Lycopersicon esculentum</i> 'Boxcar Willie'	Boxcar Willie Tomato
40	<i>Lycopersicon esculentum</i> 'Black Krim'	Black Krim Tomato
41	<i>Lycopersicon esculentum</i> 'Brandywine Red'	Brandywine Red Tomato
42	<i>Lycopersicon esculentum</i> 'La Roma'	La Roma Tomato
43	<i>Lycopersicon esculentum</i> 'Napa Grape'	Napa Grape Tomato
44	<i>Lycopersicon esculentum</i> 'San Diego Red'	San Diego Red Tomato
45	<i>Ocimum basilicum</i> 'Italian Purple'	Italian Purple Basil
46	<i>Ocimum basilicum</i>	Sweet Basil
47	<i>Physalis philadelphica</i>	Tomatillo
48	<i>Thymus X citridorus</i> 'Lime'	Lime Thyme



SAN DIEGO  
HORTICULTURAL SOCIETY  
WWW.SDHORTSOC.ORG

MANY THANKS TO:

GARDEN DESIGNED BY:

*Susanna Pagan*  
Landscape Design  
spgardens.com | 858.342.8667

GARDEN INSTALLATION BY:

Turner Landscapes (turnerlandscapes.com)

Jim Bishop - President, San Diego Horticultural Society

Marilyn Guido (marilyngarden.com)  
Mentor for the MiraCosta College Horticulture Dept. Students

MiraCosta College Horticulture Department  
Students

GARDEN ACCENTS SUPPLIED BY:

Painting - Rachel Harper - (beautyfromashesartwork.com)

Pottery -  
Madd Potter (maddpotter.com)  
Green Thumb Nursery (supergarden.com)

Repurposed Door - Katie Gaines (LovePaperPaint.com)

Succulent Pots Planted by - Chicweed (chicweed.com)

Wine bottles - Sunshine Mountain Vineyard  
(sunshinemountainvineyard.com)

GARDEN PLANTS SUPPLIED BY:

Waterwise Botanicals (waterwisebotanicals.com)

Village Nurseries (villagenurserieslc.com)

Evergreen Nursery (evergreennursery.com)

GARDEN HARDSCAPE SUPPLIED BY:

Agri Service (agriserviceinc.com)

Modern Builders Supply (modernbuilders.net)

Southwest Boulder & Stone (southwestboulder.com)